

# JOSEPH US

ARCHITECTURE

VER 01 | FEB 2025



COMPANY PROFILE

# ABOUT US

At **JOSEPHUS**ARCHITECTURE, we believe that architecture is more than just structures—it's about creating spaces that deliver an experience our clients long for. With 18 years of expertise in Dubai, we specialize in designing honest, clean, and timeless architecture that is both elegant and functional.

Our approach is rooted in understanding and listening. Every project is a dialogue, ensuring that each space is thoughtfully crafted to reflect our clients' vision while maintaining simplicity that speaks volumes.

We create spaces that are not just designed—but **felt**.

Timeless **design**. Thoughtful **spaces**. Lasting **impact**.



**JOSEPHUS**TABOADA  
ARCHITECT | FOUNDER

**Experience** | 18 years of expertise in architectural design, and project execution in Dubai

**Approach** | A deep passion for design that blends function, aesthetics, and emotion to create meaningful spaces

**Philosophy** | Architecture should be timeless, elegant, and purposeful, resonating with its users beyond mere aesthetics

# DESIGN PHILOSOPHY

## Simplicity That Delivers Impact

*We believe that the essence of great architecture lies in its simplicity. Every line, form, and material serves a purpose, ensuring that the final outcome is both functional and visually compelling.*

## Timeless Elegance

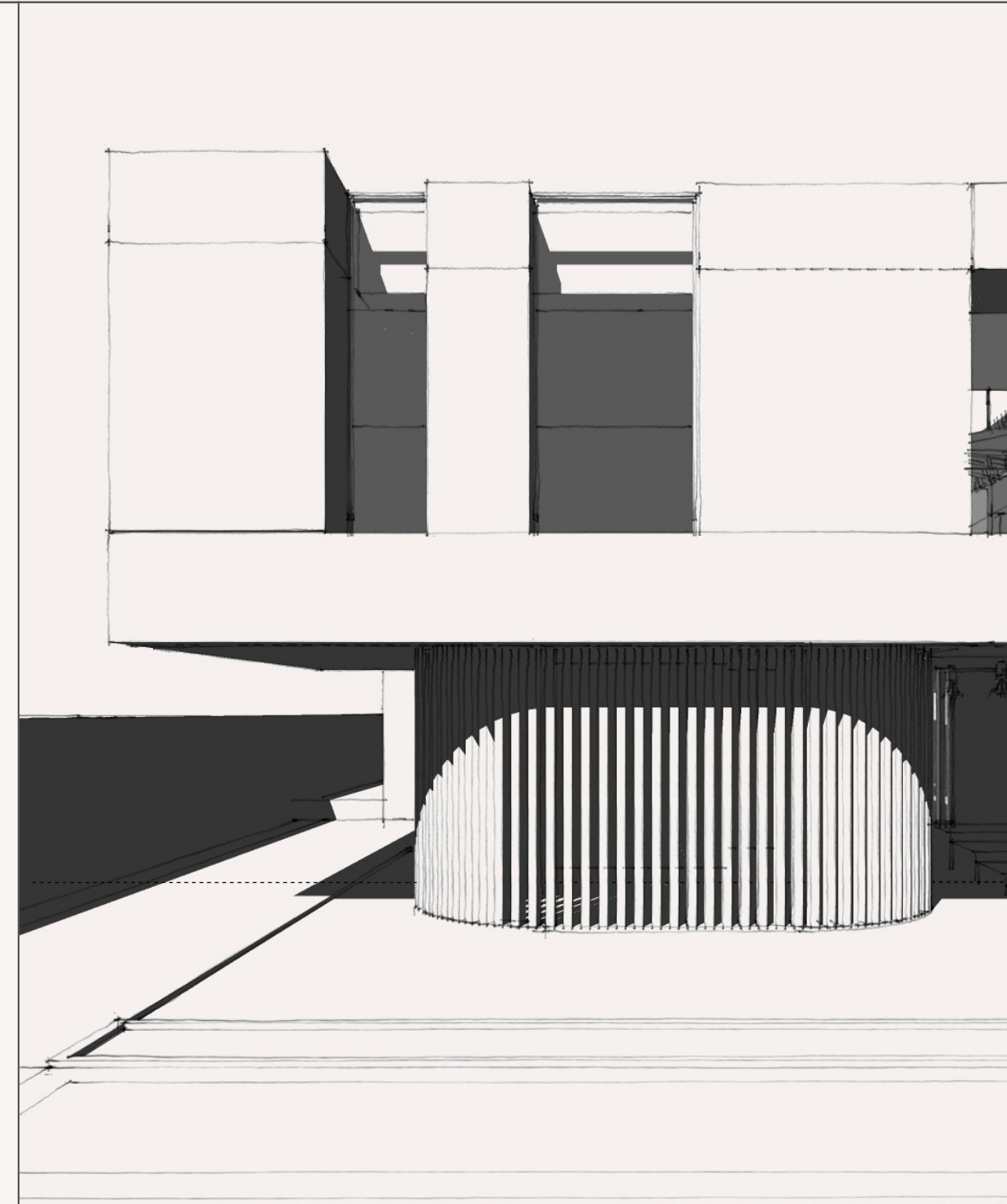
*Trends fade, but true elegance is enduring. Our designs transcend time, offering a refined aesthetic that remains relevant and inspiring for years to come.*

## Human-Centered Design

*Every space we create is built around the people who will experience it. We listen, interpret, and design with a deep understanding of our clients' needs, ensuring a seamless interaction between architecture and its users.*

## A Collaborative Process

*Architecture is a dialogue. We engage with our clients, engineers, and designers to craft solutions that not only meet but exceed expectations.*



# SERVICES

We offer  
a comprehensive range of  
architectural and design  
solutions, ensuring every  
project is executed with  
precision, creativity,  
and functionality.

## ARCHITECTURALDESIGN

- PHASE I

Pre-Concept Design

| Research, feasibility studies, site analysis, and initial design strategy

Concept Design

| Development of project vision, spatial planning, massing studies, and design direction
- PHASE II\*

Schematic Design

| Engagement of technical consultants (structural, MEP, & others); preparation of submission set for approvals

Authority Submission

| Coordination with local authorities for approvals and permits
- PHASE III

Detailed Design

| Comprehensive architectural drawings and technical specifications ready for construction

Tender

| Preparation of tender documents and contractor selection assistance
- PHASE IV\*

Post-Contract Services

| Site supervision, design validation, and project execution oversight

\*with a partner AOR/Engineering office

## INTERIORDESIGN

- Concept Design

| Development of the overall interior vision, theme, and mood board
- Schematic Design

| Space planning, furniture layout, and preliminary material selection
- Detailed Design

| Technical drawings, joinery details, and material specifications
- Tender

| Preparation of tender documents and assistance in contractor selection
- Post-Contract Services

| Site supervision, design validation, and implementation oversight



# P J 0 1 V I L L A







G+1+R RESIDENTIAL VILLA  
 LOCATION: PALM JUMEIRAH, DUBAI  
 STATUS: CONCEPT DESIGN  
 BUA: 1800 SQ.M



P J O 1 V I L L A



P J O 2 V I L L A







G+1+R RESIDENTIAL VILLA  
 LOCATION: PALM JUMEIRAH, DUBAI  
 STATUS: CONCEPT DESIGN  
 BUA: 600 SQ.M

**P J O 2 V I L L A**

**JOSEPHUS**  
 ARCHITECTURE



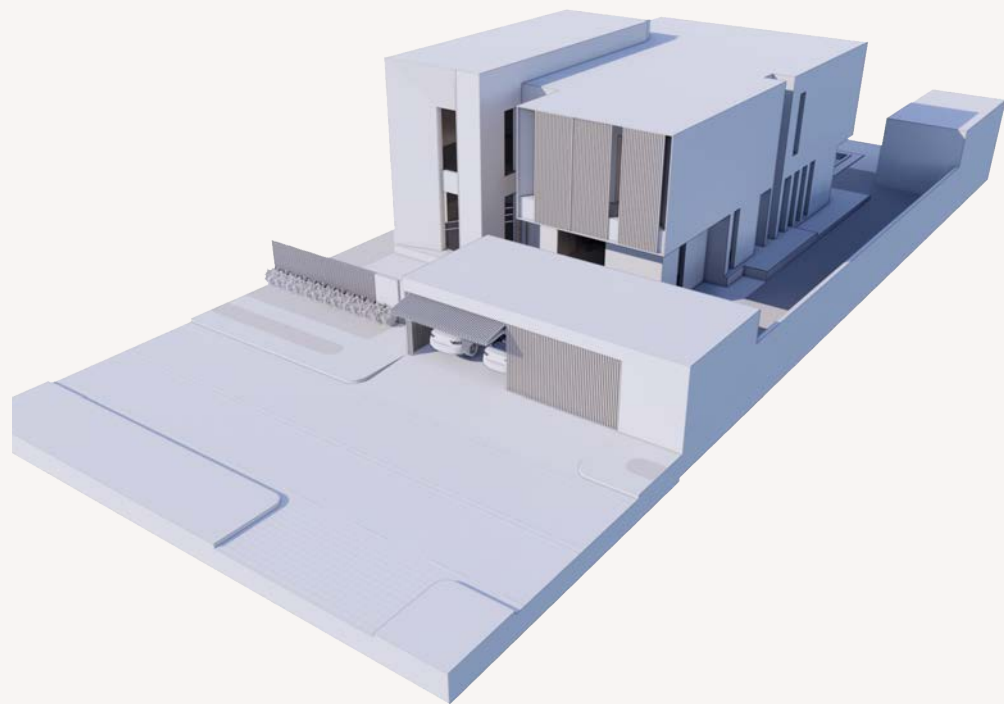


G+1+R RESIDENTIAL VILLA  
 LOCATION: DUBAI HILLS, DUBAI  
 STATUS: COMPLETED  
 BUA: 3500 SQ.M  
 DESIGNED FOR WW ARCHITECTS



# D H O 1 V I L L A





DESIGN COMPETITION AWARDEE  
RESIDENTIAL DEVELOPMENT COMPLEX  
LOCATION: ABU DHABI  
STATUS: CONCEPT DESIGN  
DESIGNED FOR WW ARCHITECTS

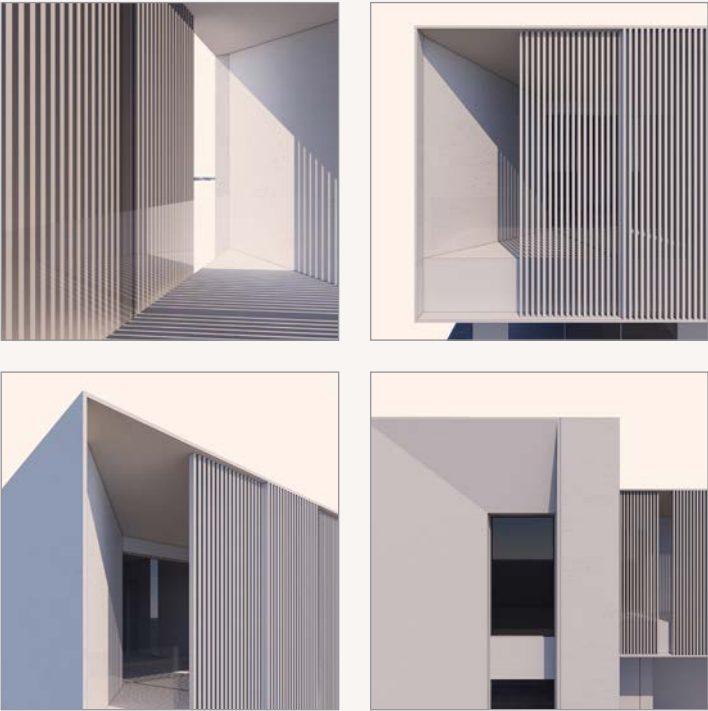


**B A G V I L L A S**

**JOSEPHUS**  
ARCHITECTURE



B A G V I L L A S





# P J 0 3 V I L L A



EXISTING VILLA BEFORE MODIFICATION

G+1+R RESIDENTIAL VILLA MODIFICATION  
LOCATION: PALM JUMEIRAH, DUBAI  
STATUS: CONCEPT DESIGN  
BUA: 600 SQ.M





# P J 0 3 V I L L A





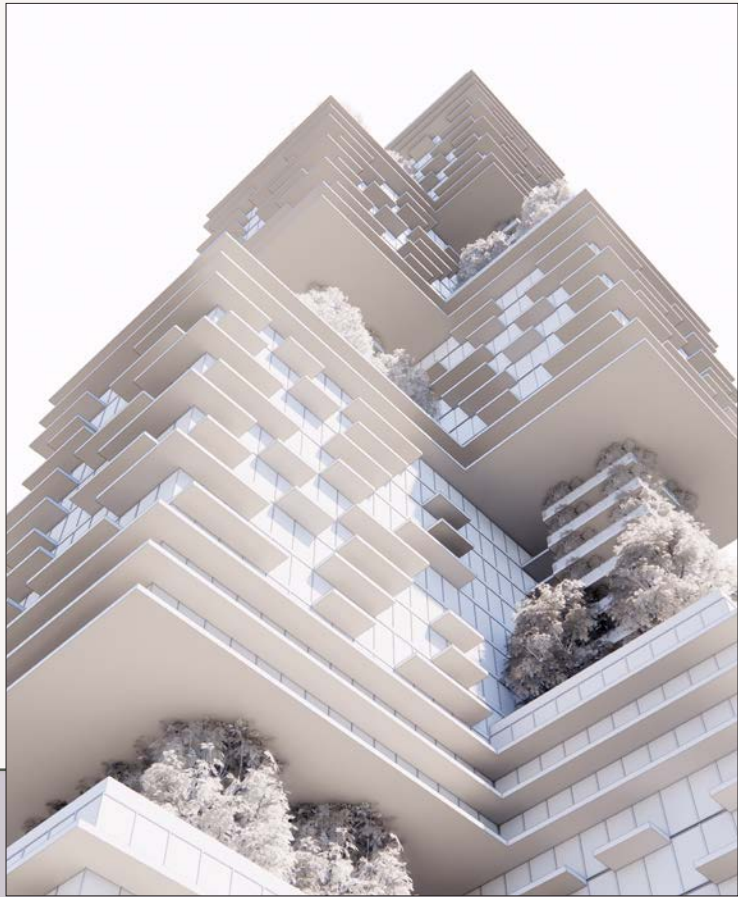


# SOCIETYHOUSE

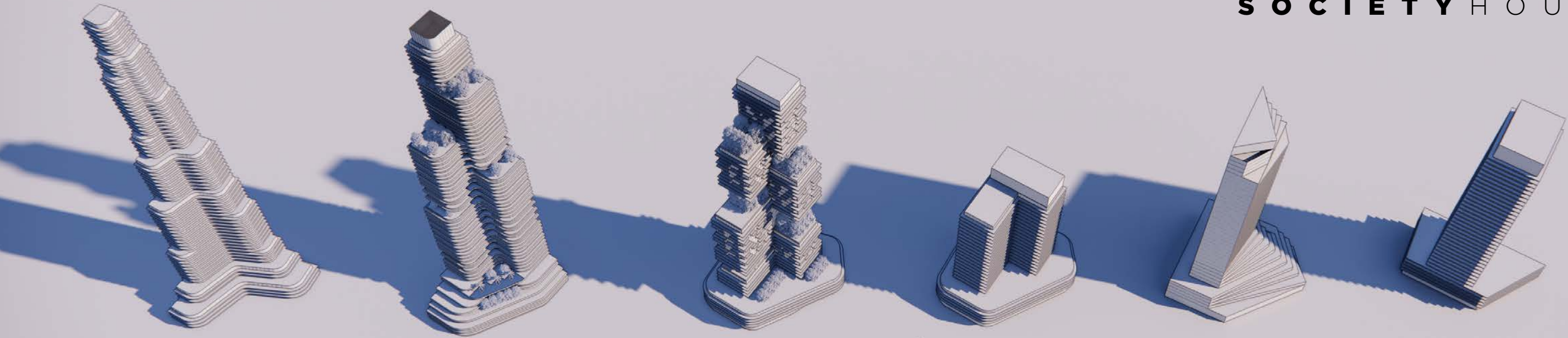
B+G+52 LUXURY RESIDENTIAL TOWER  
 LOCATION: BUSINESS BAY, DUBAI  
 STATUS: UNDERCONSTRUCTION  
 HEIGHT: 52 STOREY TOWER  
 DESIGNED FOR WW ARCHITECTS



CONCEPT STUDIES



SOCIETYHOUSE





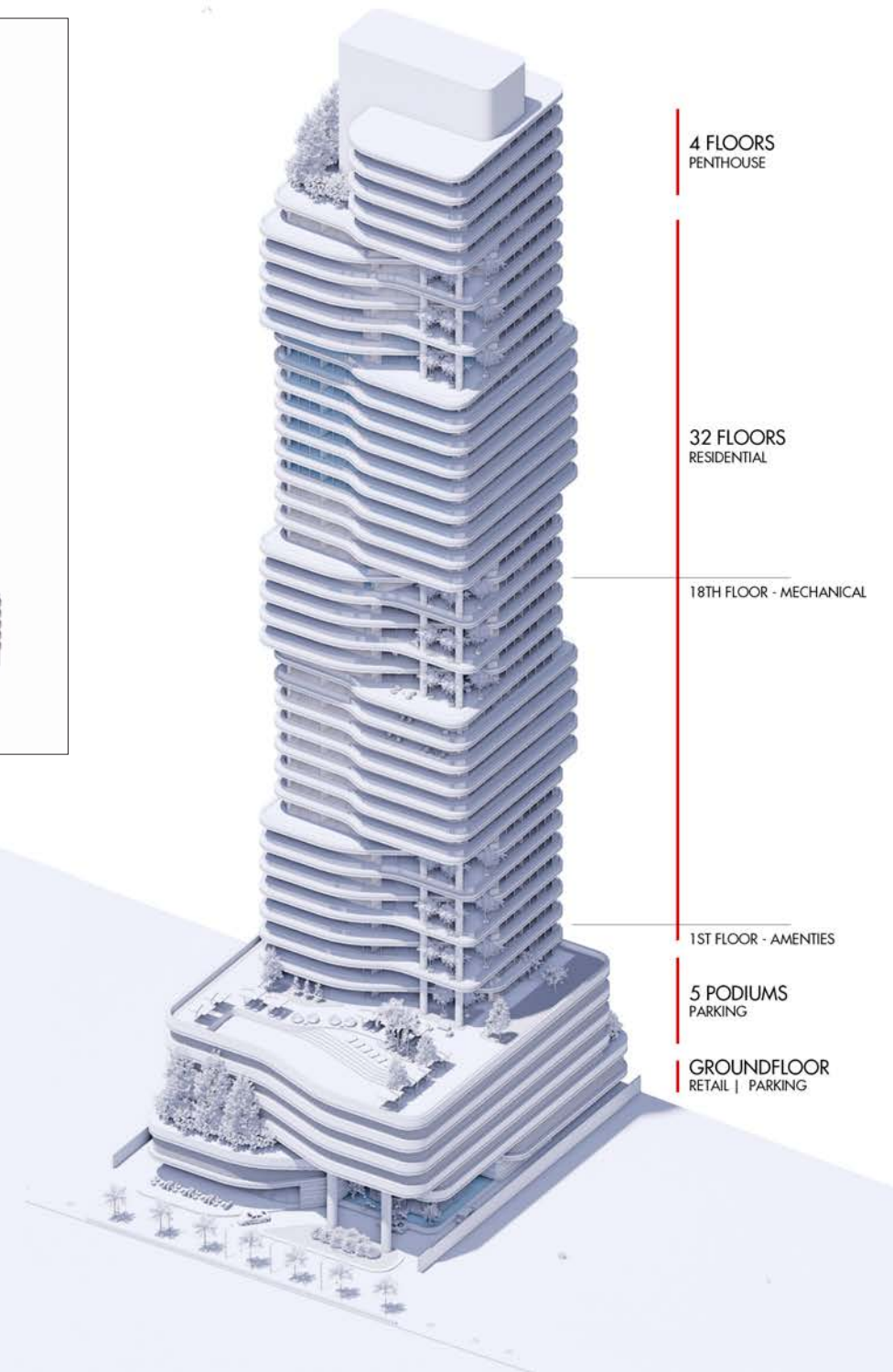
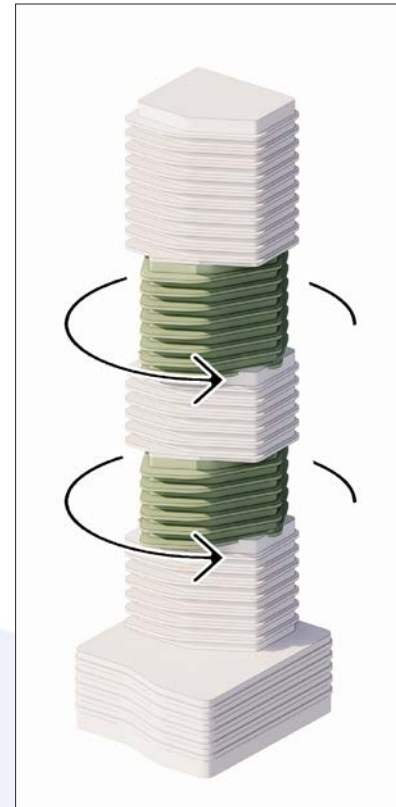


R A S A L K H O R T O W E R

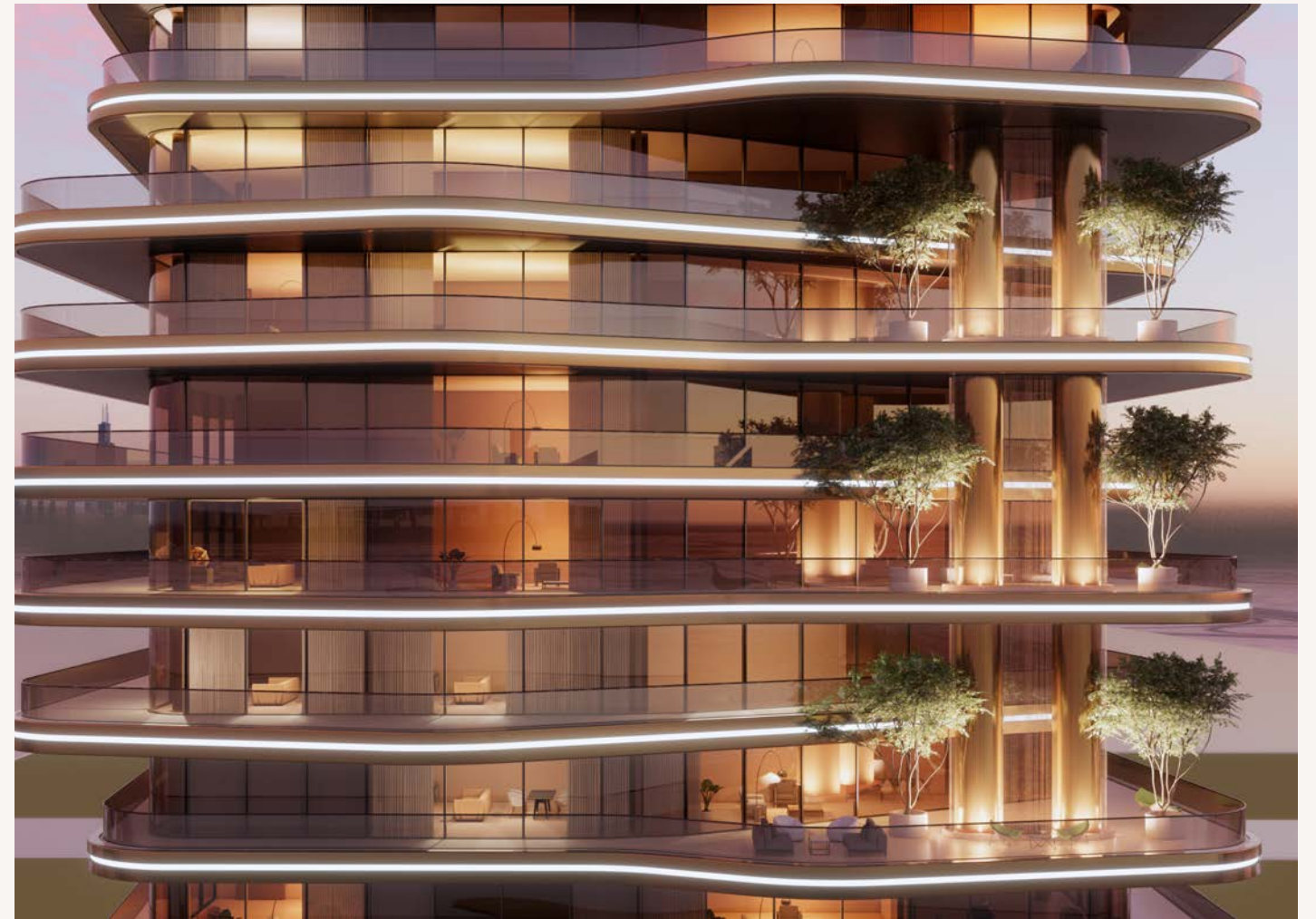




# R A S A L K H O R T O W E R

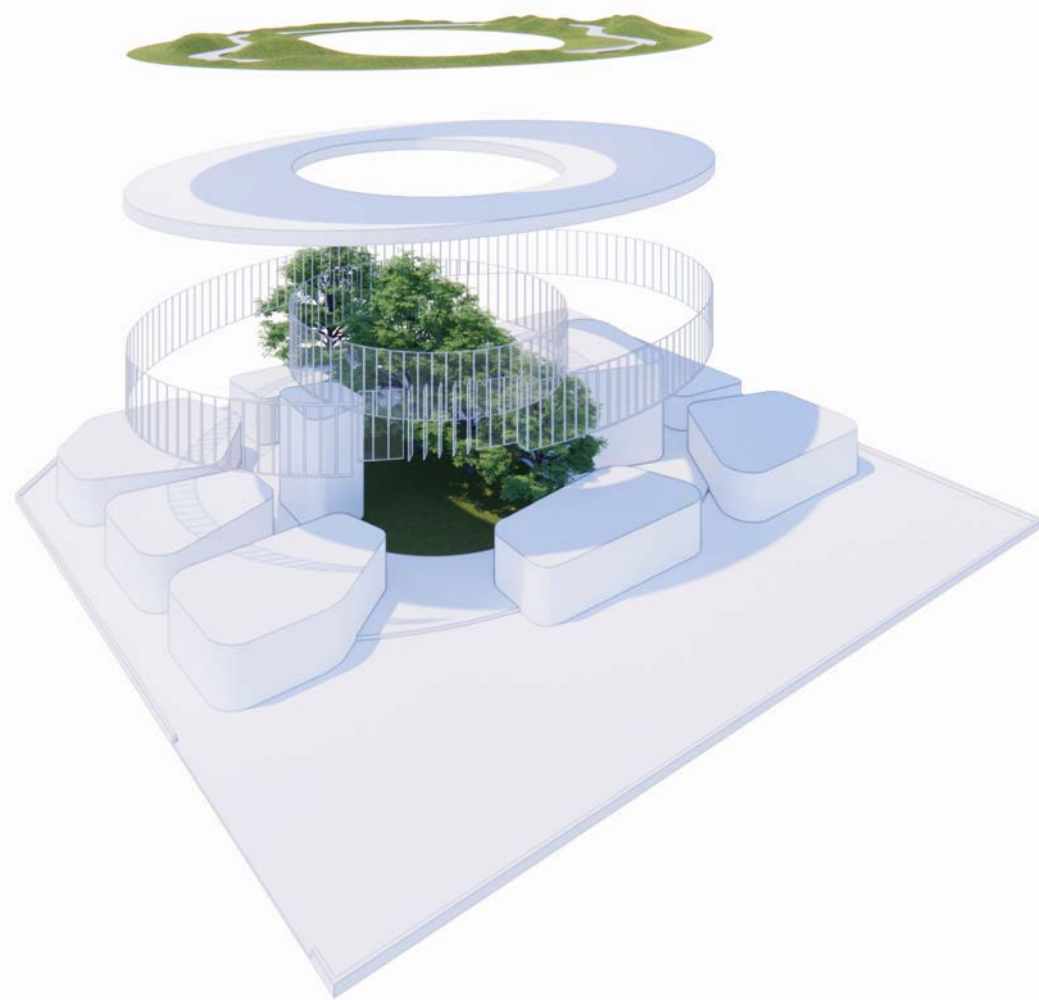






R A S A L K H O R T O W E R





**H E I** S C H O O L





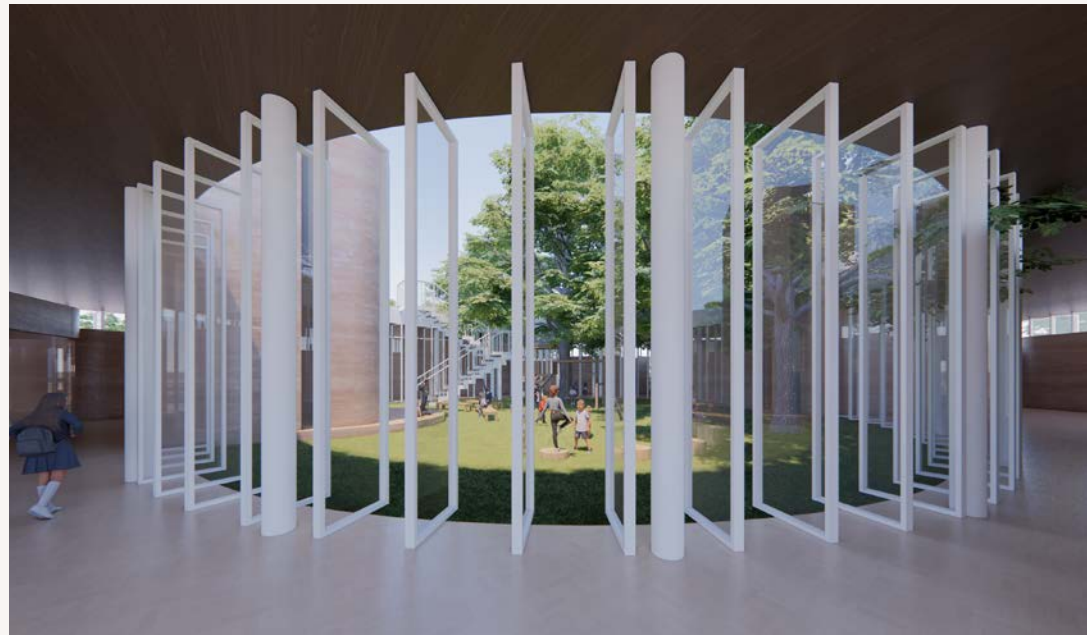
## HEI SCHOOL

G ONLY NURSERY SCHOOL  
 LOCATION: DUBAI HILLS, DUBAI  
 STATUS: UNDER CONSTRUCTION  
 BUA: 900 SQ.M



H E I S C H O O L





## HEI SCHOOL

G ONLY NURSERY SCHOOL  
 LOCATION: DUBAI HILLS, DUBAI  
 STATUS: UNDER CONSTRUCTION  
 BUA: 900 SQ.M







**THANK** YOU.

Get in touch with us:

Email: josephus@**josephus**architecture.com

No.: 00971 55 258 6 852

[www.josephusarchitecture.com](http://www.josephusarchitecture.com)